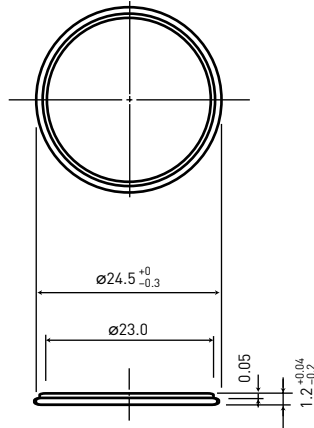


## 2 MANGANESE DIOXIDE LITHIUM BATTERIES (CR SERIES)

### CR-2412

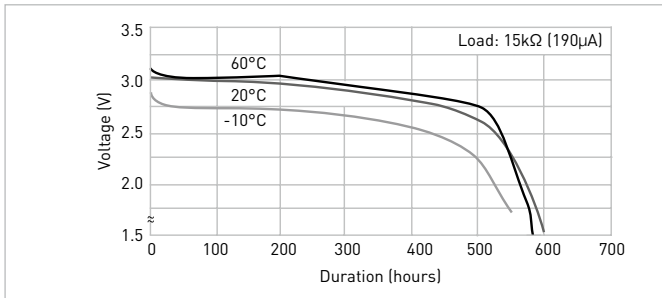
#### DIMENSIONS (MM)



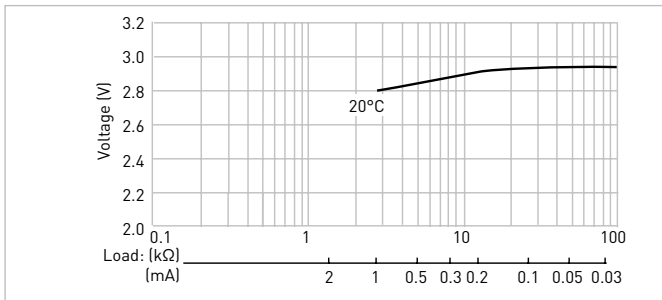
Model number	CR-2412
Nominal voltage (V)	3
Nominal capacity (mAh)	100
Diameter (mm)	24.5
Total height (mm)	1.2
Discharging temperature range (°C)	-30 to +85
Weight (g)	2.0

\*Please consult Panasonic when anticipating usage in operating temperature of 70°C or above.

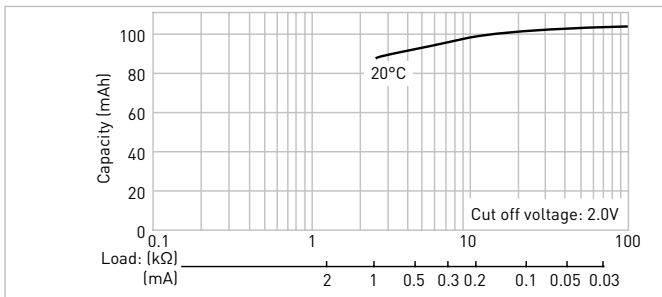
#### DISCHARGE TEMPERATURE CHARACTERISTICS



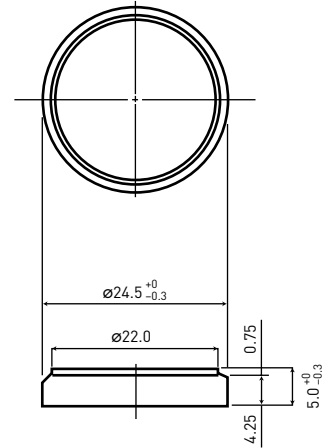
#### OPERATING VOLTAGE VS. DISCHARGE CURRENT\*1



#### CAPACITY VS. LOAD RESISTANCE



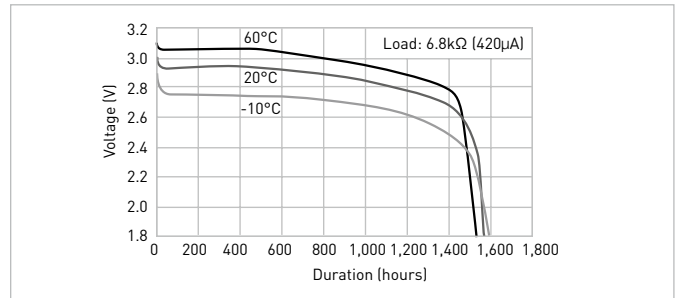
### CR-2450



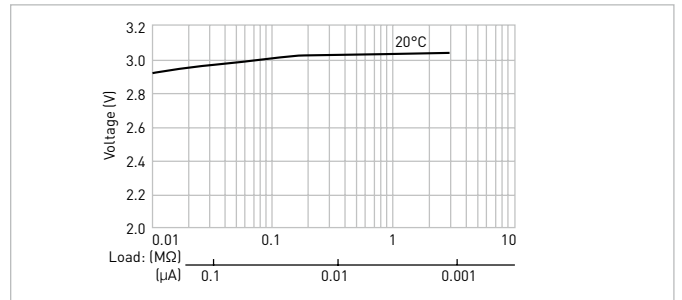
Model number	CR-2450
Nominal voltage (V)	3
Nominal capacity (mAh)	620
Diameter (mm)	24.5
Total height (mm)	5.0
Discharging temperature range (°C)	-30 to +85
Weight (g)	6.2

\*Please consult Panasonic when anticipating usage in operating temperature of 70°C or above.

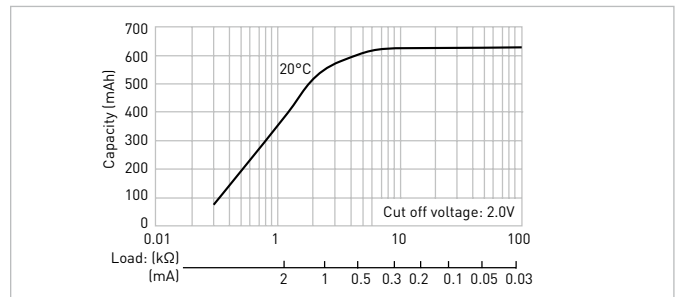
#### DISCHARGE TEMPERATURE CHARACTERISTICS



#### OPERATING VOLTAGE VS. DISCHARGE CURRENT\*1



#### CAPACITY VS. LOAD RESISTANCE



The data in this document are for descriptive purposes only and are not intended to make or imply any guarantee or warranty.

\*1 Voltage at 50% discharge depth.